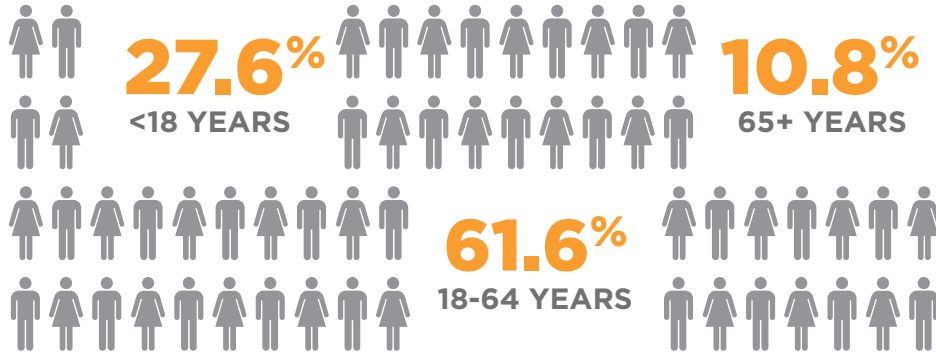
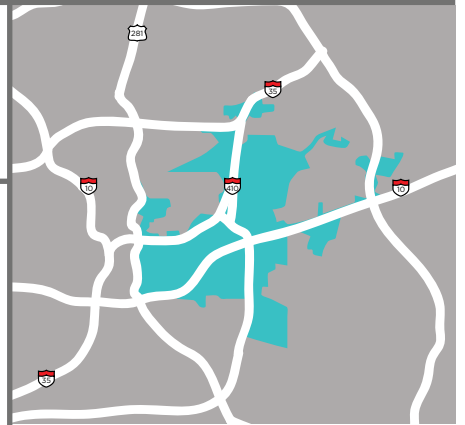


# DISTRICT 2

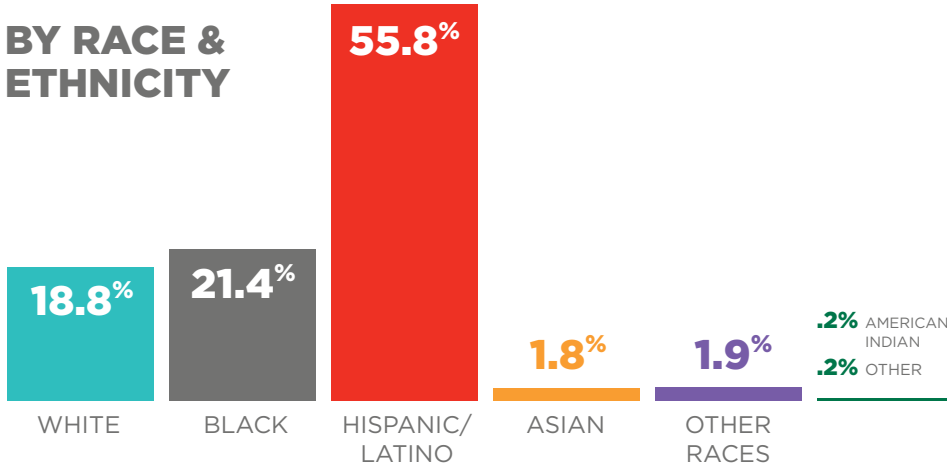
CITY COUNCIL REPRESENTATIVE  
**WILLIAM "CRUZ" SHAW**  
 210.207.7278

POPULATION **170,585**



**56** SQUARE MILES

## BY RACE & ETHNICITY



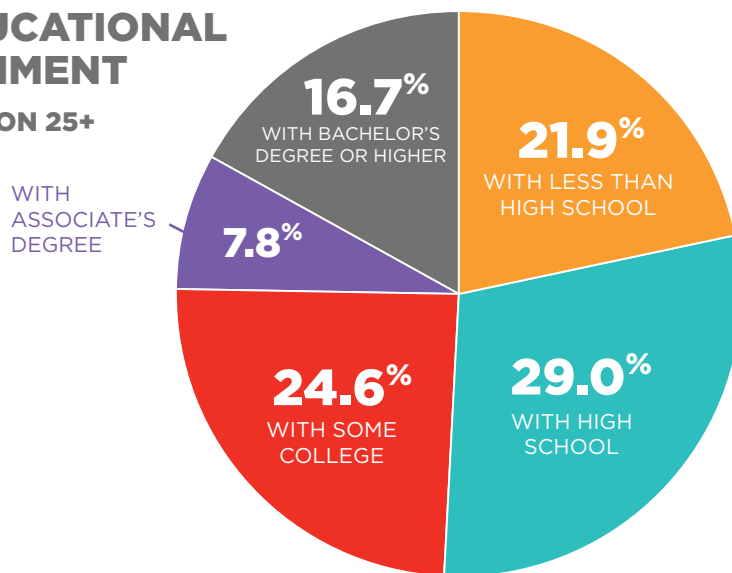
**44** PARKS

**3** LIBRARIES

**DISTRICT 2** SENIOR CENTER

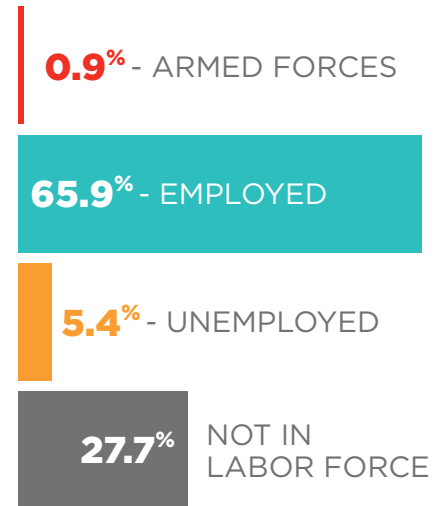
## BY EDUCATIONAL ATTAINMENT

POPULATION 25+



## EMPLOYMENT STATUS

AGE 25-64  
 86,199 (EST. TOTAL POP.)



**\$18,557**  
 PER CAPITA INCOME

**10.6%**  
 VOTER TURNOUT

**24.6%**  
 POVERTY RATE

**22.0%**  
 POPULATION UNINSURED